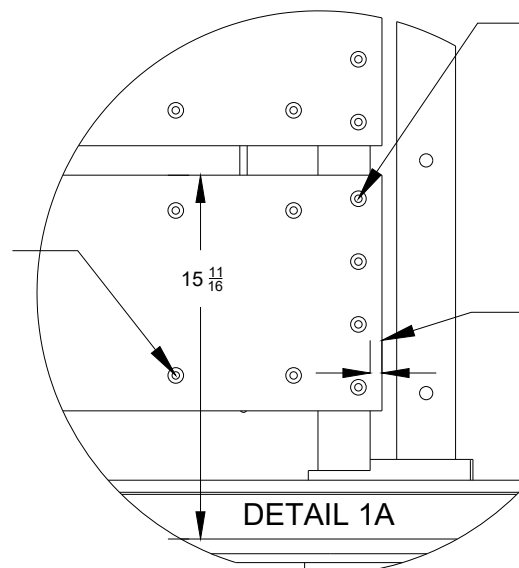


1A

**Step 4:**  
Secure down slide in  
four places (red) at  
required measurement.  
Drill remaining holes  
(green) with  $\frac{5}{16}$ " drill bit.

**Step 3:**  
Measure  $15 \frac{11}{16}$ " ( $\pm \frac{1}{16}$ ")  
from inside of frame rail to  
edge of bed slide (as  
shown)



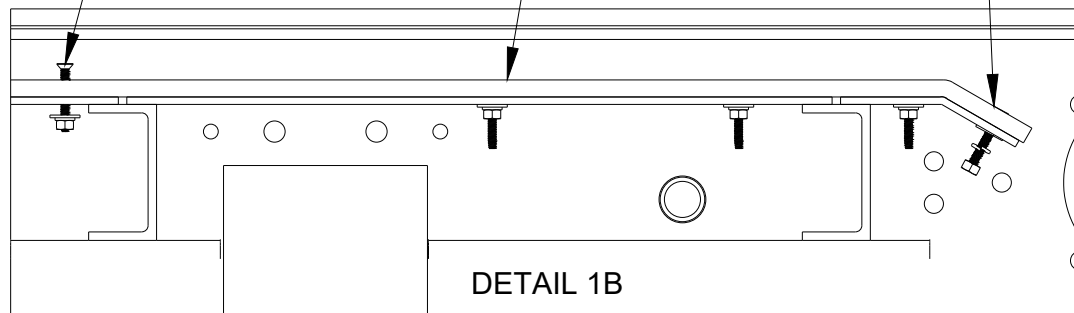
DETAIL 1A

**Step 1:**  
Orientate bed slide  
correctly so that  
the four holes that  
are pre-drilled face  
the back of the  
box.

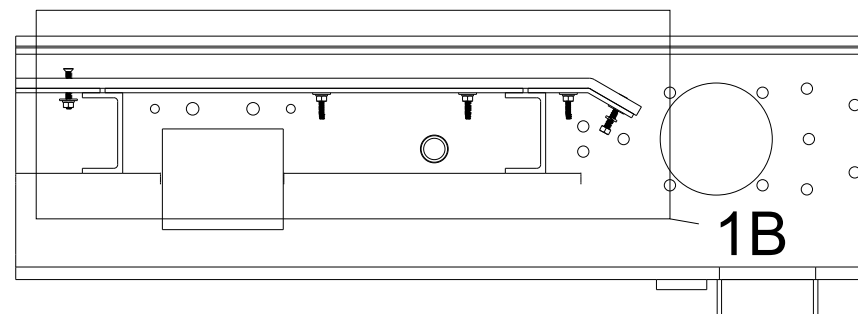
**Step 2:**  
Hang the bed slide  
over the edge of  
bed about  $\frac{3}{8}$  -  $\frac{1}{2}$ "  
(check front to  
ensure its about  
the same)

**Step 5:**  
Insert bolts into holes and  
install hardware  
underneath. When  
tightened, face of bolt  
should be set into plastic  
about  $\frac{1}{8}$  -  $\frac{3}{16}$ "

**Step 6:**  
Clamp and drill/fasten  
angled sections last



DETAIL 1B



1B

PART NUMBER:

PART DESCRIPTION:  
**Bed Slide Installation**

QTY:

REV:

DRAWN BY:

**FH**

DATE:

**5/12/2025**

SCALE:

**PROPRIETARY AND CONFIDENTIAL**

THE INFORMATION CONTAINED IN THIS  
DRAWING IS THE SOLE PROPERTY OF  
CANAMERICAN STONE SPREADER. ANY  
REPRODUCTION IN PART OR AS A  
WHOLE WITHOUT THE WRITTEN  
PERMISSION OF CANAMERICAN STONE SPREADER IS  
PROHIBITED

